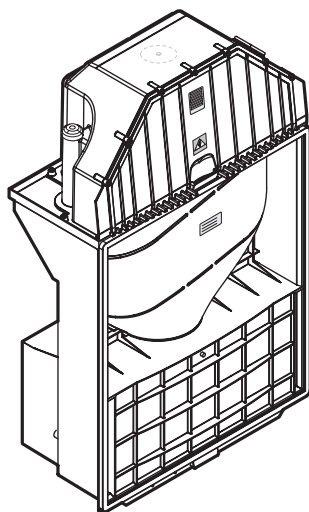


---

## Operation, maintenance and installation manual QB central power unit



EN

# INDEX

## GENERAL INFORMATION

- 3 General warnings
- 3 Warranty
- 4 Safety
- 4 Certifications
- 4 Identification
- 4 Manufacturer
- 5 Identification plate
- 5 TUBÒ System description
- 6 Part description
- 7 Technical features
- 8 Intended use
- 8 Prohibited uses
- 8 Unauthorised uses
- 8 Operator
- 8 Residual risk
- 9 Start/Stop

## ORDINARY MAINTENANCE

- 18 Ordinary maintenance
- 18 Dust container replacement
- 20 Filter cartridge replacement
- 21 Filter cartridge regeneration
- 22 Central power unit disposal
- 23 Troubleshooting

## INSTALLATION

- 10 Opening the Pack
- 10 Installation location
- 11 Installing the QB central power unit
- 13 Fixing QB to the enclosure
- 14 Electrical connection
- 15 Inserting the dust container and removable body
- 15 Assembling the frame and door kit  
(Code CM821Q--separate article)
- 17 General testing

## GENERAL WARNINGS

### **Read and conserve this manual**

The installation, use and maintenance manual is an integrating and essential part of the central power unit and therefore must be read with utmost attention as it contains important indications on operator safety, foreseen operation and proper maintenance of the central power unit.

---

### NOTE

---

AERTECNICA reserves the right to modify the product and the related technical documentation without incurring any obligation to third parties.

No part of this manual may be reproduced, copied or distributed in any manner without written authorisation from AERTECNICA.

## WARRANTY

### **Warranty terms within the European Union (EU)**

AERTECNICA guarantees the central vacuum unit for a period of 24 months starting from the documented (invoice or tax receipt) date of purchase.

If there is no documentation proving the purchase date, the 24-month period will refer to the date on which the central vacuum unit was sold by AERTECNICA.

The warranty conditions are those envisaged in the current legislation of the European Union (EU).

Should any disputes arise, the Court of Forli-Cesena (Italy) shall have exclusive jurisdiction and Italian law will apply.

### **Warranty terms outside the European Union**

As regards countries outside the European Union, the importer shall be liable for the warranty, and the warranty terms shall comply with the laws in effect in the country of import.



This manual is printed on 100% recycled paper.

## SAFETY

The operator must accurately respect the following operating instructions in order to guarantee the safety of persons and the functioning of the central power unit.



**DANGER:** means that caution must be taken in order to avoid events that may cause serious accidents to persons or health injuries.



**ELECTRICAL DANGER:** make surer that the central power unit is connected with its power cable to an earthing system up to code. The power supply and relative socket must be suited to the nominal power of the central power unit. For exterior installations, the power socket must have a suitable IP rating.



**DANGER OF DAMAGE TO CENTRAL POWER UNIT:** respect the indications in section INTENDED USE and PROHIBITED USE to avoid damaging the central power unit.



**INHALATION OF HAZARDOUS ELEMENTS AND DUST:** protect the respiratory system through the use of protective devices when emptying the dust container and replacing the filter cartridge in order to avoid breathing in collected dust.



**DUST SENSITIVE:** means that hand protection must be worn by operators sensitive to the action of collected dust.

## CERTIFICATIONS

Aertecnica S.p.A is a company certified with:



Quality system  
UNI EN ISO 9001  
Environmental management  
system  
UNI EN ISO 14001



Product certification for the QB  
series Q200 model

## IDENTIFICATION

This use and maintenance manual is inherent to the central power unit:

**SERIES: QB**  
**MOD: Q200**

## MANUFACTURER

**AERTECNICA S.p.A.**  
Via Cerchia di Sant'Egidio,760  
47521 Cesena (FC) ITALY  
Tel. +39 0547/637311  
Fax +39 0547/631388  
info@aertecnica.com  
www.aertecnica.com

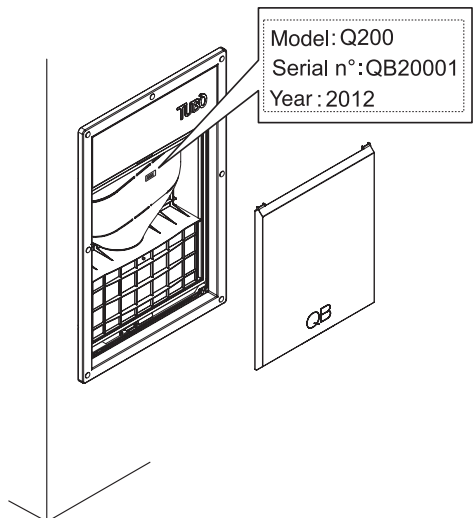
## Technical service

For assistance, spare parts or information on the central power unit visit the website: **www.aertecnica.com**

To simplify customer assistance, please provide the following data on the label applied to the removable body of the QB central power unit:

- central power unit model
- serial number
- year of manufacturing

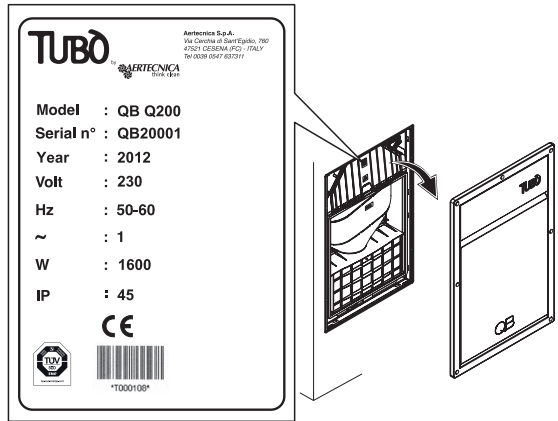
If possible also provide purchase date of the QB central power unit (date of purchase proven by the relative documentation: invoice or tax receipt)



## IDENTIFICATION PLATE

The identification plate of the QB central power unit is applied to the cover of the motor compartment, which can be accessed by specialised personnel after disassembling the frame.

The identification data is shown in the figure at the side.



## DESCRIPTION OF THE TUBÒ VACUUM SYSTEM POWER UNIT

The central power unit purchased is the main element of TUBÒ, the advanced vacuum system power unit by Aertecnica.

The Tubò SYSTEM comprises a central power unit, vacuum sockets installed in the building walls, flexible hose that is inserted into the vacuum sockets depending on the area to clean, and a set of cleaning accessories able to meet all household needs.

A network of plastic hoses installed underfloor and inside walls constitutes the dust inlet line connected to the central power unit.

The vacuumed dust reaches the central power unit; coarse dust falls into the dust container while the filter traps suspended dust; micro-dust (invisible to the eye and not filtered by the cartridge) are expelled outside by means of an air exhaust line to assure ambient hygiene and avoid recirculation of dust inside the house.

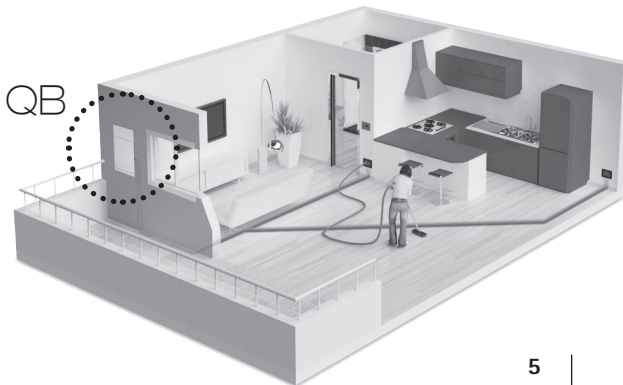
The system must only be used by one operator.

The system must only be used with the hose and cleaning accessories connected to Aertecnica sockets installed in the building.

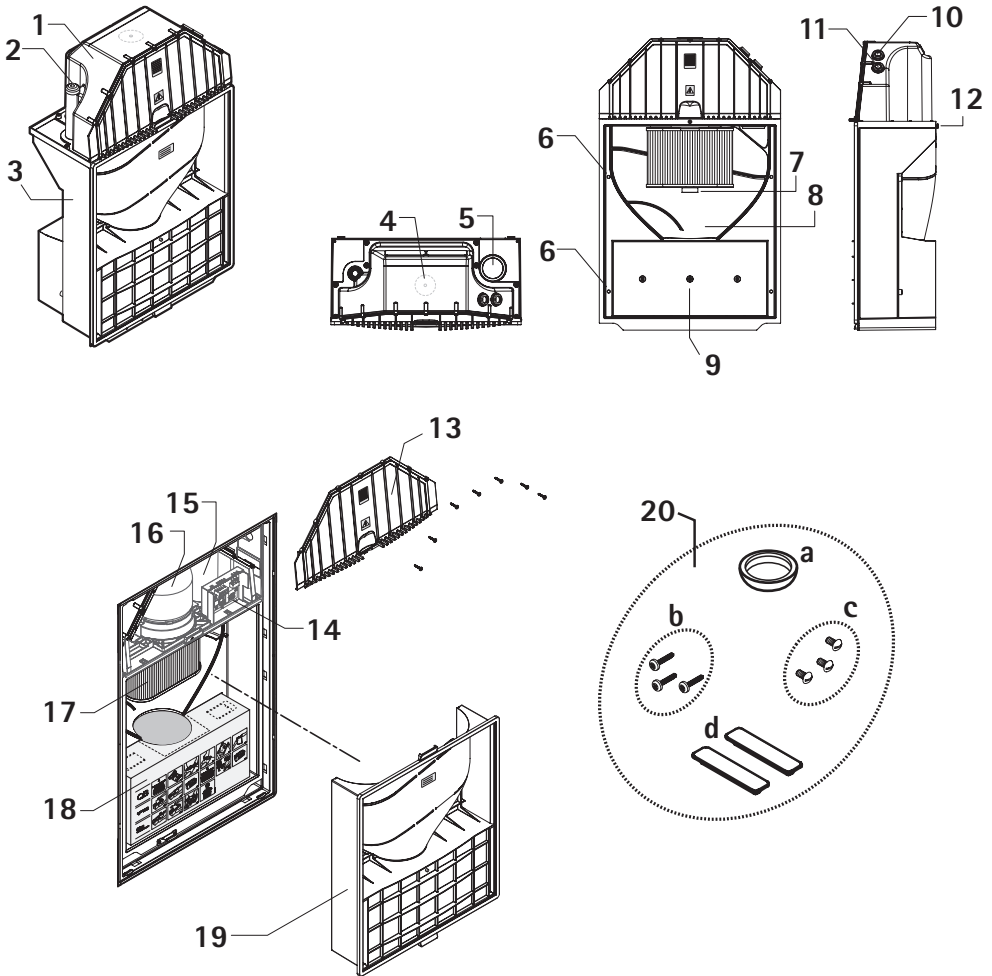
The recommended flexible hose is 7 m. long and makes it possible to cover a circular surface of 30 m<sup>2</sup> (reduction of circumference radius is due to furniture obstacles that forces the hose to follow a curved path). The dust container must be replaced routinely (2-3 times per year; see section DUST CONTAINER) REPLACEMENT. The filter cartridge must be replaced with a new one every 2-3 years (in relation to use; see section FILTER CARTRIDGE REPLACEMENT).

The filter cartridge may be regenerated by washing it routinely (in relation to use; see section FILTER CARTRIDGE REGENERATION).

These indications are purely indicative for a normal use of the centralized vacuum system. These intervals of time are reduced for intensive use of the system, or in cases of abundant dust.



## PART DESCRIPTION



### Legend

- |   |   |
|---|---|
| 1 - Motor compartment body                  | 13 - Motor compartment door                   |
| 2 - Safety valve                            | 14 - Electronic board                         |
| 3 - Central power unit body fixed section   | 15 - Motor compartment                        |
| 4 - Preparation for channelled air exhaust  | 16 - Motor-turbine with soundproofing         |
| 5 - Dust line inlet                         | 17 - Filter cartridge in washable polystyrene |
| 6 - Magnet clasping system                  | 18 - Cardboard dust container                 |
| 7 - Filter cartridge fixing knob            | 19 - Central power unit removable section     |
| 8 - Cyclonic compartment                    | 20 - Installation kit supplied                |
| 9 - Holes for fixing central power unit     | a - sealing gasket                            |
| 10 - Inlet socket activation line sheathing | b - CM021Q fixing screws                      |
| 11 - Inlet power supply line sheathing      | c - CM010 fixing screws                       |
| 12 - Enclosure fixing hook                  | d - air exhaust opening caps                  |

## TECHNICAL FEATURES

<b>QB CENTRAL POWER UNIT</b>		
Model		<b>Q200</b>
Code		<b>CM200Q</b>
Power supply	Volt (Vac)	230
Motor power	Watts (W)	1.600
Frequency	Hz	50/60
Electric degree of protection <sup>1</sup>	IP	IP55
Motor rpm	rpm	46.480
SOFT START starting		YES
Turbine stages	n°	1
Socket power supply	Volt (Vcc)	12
Vacuum power	Air Watts	653
Max. air flow rate	m <sup>3</sup> /h	195
Max. vacuum	mbar	313
Noise	dB	55,8
Filter cartridge surface	cm <sup>2</sup>	6500
Filter cartridge material		POLYESTER
Dust container capacity	litres	13
Weight	kg	13
Compatible with CMT800 (optional)		YES
Compatible with CM8890 (optional)		YES
Compatible with PRATICO system		YES

<sup>1</sup> The electrical degree of protection (IP) measures the protective value of the central power unit against external atmospheric agents. The value is calculated while the central power unit is installed outdoors of the house and with door shut. The values are: IP55 with channelled air exhaust by hose; IP45 frontal air exhaust from the door of the central power unit.

## INTENDED USE

The central power unit was designed to be connected to tubing able to vacuum domestic dust.

The operator uses the flexible hose and cleaning accessories connected to the vacuum sockets.

The system must only be used by a single operator to only vacuum dust or minuscule solid particles, using only one vacuum socket at a time in order to secure adequate efficiency.

The dust container must be replaced with a new one when full.

The filter cartridge must be routinely checked depending on the use of the central vacuum system. It can be regenerated or replaced as indicated in the maintenance chapter.

Always use original Aertecnica spare parts.

## PROHIBITED USE

- Do not vacuum burning cigarettes, scorching cinders or burning materials. These materials may cause a fire and causing damage to the hosing or central power unit.
- Do not vacuum up cloths, rags, fabrics or textiles in general. This material may clog hoses or damage the central power unit.
- Do not allow children to play with the vacuum sockets, opening and closing them repeatedly or inserting toys or solids of inadequate size.
- Do not use the central vacuum system while the central power unit is on and with no filter installed.
- Do not obstruct the exhaust line of the central vacuum system.
- Do not obstruct the air exhaust openings that allow motor cooling.
- Do not use the cleaning accessories to vacuum body parts.
- Do not install the central power unit in an environment classified as ATEX as per European Union standards.
- Always use original spare parts. Their use may forfeit the warranty.

## UNAUTHORISED USE

Do no vacuum liquids or water soaked materials or very moist: liquid vacuuming can be done only with Aertecnica liquid vacuum (code AP372; code AP373).

- Do not vacuum dust using more than one vacuum socket at the same time.
- Never leave the hose and cleaning accessories connected to the system unattended whilst the central power unit is on.

## OPERATOR

The operator must not present limited physical, sensory or mental capabilities; the operator must not be an unskilled person or a person with no knowledge of the product unless the aforementioned is under the supervision of somebody responsible for their safety or has received instructions with regards using the central power unit.

The operator must always be careful when using the system in order to avoid tripping over the hose or cleaning accessories connected to the system, and must extend these same personal safety measures to the persons which may be present in the area at the same time.

The operator in charge of maintenance of the central power unit must not suffer dust allergies.

The operator must be over the age of 14 years.

## RESIDUAL RISK

Routine maintenance may not be performed by individuals having dust allergies.



### DUST ALLERGIES



Put on personal protection gear before emptying the dust container or replacing/cleaning the filter cartridge.





## START / STOP

### CENTRAL POWER UNIT START

The central power unit is always powered and engages when the operator starts up the unit with the flexible hose (TYPE 1 or TYPE 2) or with automatic engaging vacuum sockets.

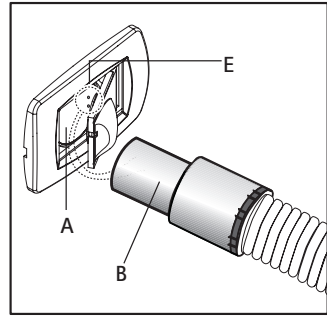
With the flexible hose **TYPE 1**:  
flexible hose with activation union: the central power unit is started up by inserting union (B) inside the vacuum socket (A).

With the flexible hose **TYPE 2**:  
flexible hose with switch: the central power unit is started by pressing the switch on the hose. Insert the hose-socket union (c) with the coupling plates (D) in correspondence of the contacts (E) inside the socket (A).

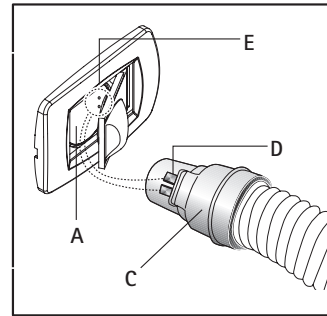
### CENTRAL POWER UNIT OFF:

with the flexible hose TYPE 1 remove the tube from the vacuum socket (A);  
with the flexible hose TYPE 2 move the switch to OFF.

TYPE 1



TYPE 2



---

#### NOTE

---

In the vacuum socket models Air Active, Open and in sockets NEW AIR with micro-switch (NA699) the central power unit starts when the socket door is opened.

## OPENING THE PACK

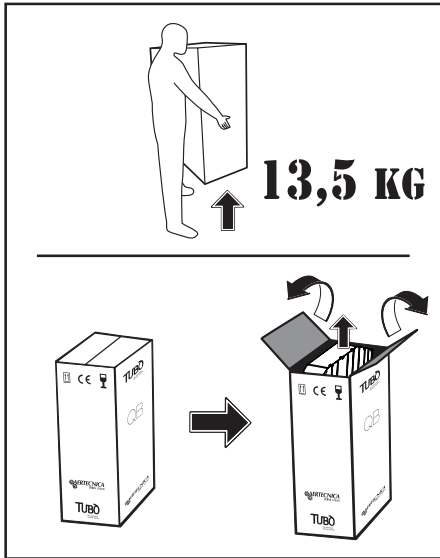
Do not remove the pack until installation to avoid impacts or damage.

Keep the pack upright when opening; open the two top flaps, remove the internal layer and damping spacer and extract the central power unit.

---

### NOTE

Before installing the central power unit QB check the integrity of the central power unit and of the accessories supplied.



---

### NOTE



#### PACK DISPOSAL

The pack elements of the central power unit are solid inert materials that must be disposed of in accordance to the laws on such matter.

## INSTALLATION LOCATION

The central power unit must be installed in well-ventilated service rooms (for example, closets, garages, cellars or attic rooms) protected from significant climate changes.

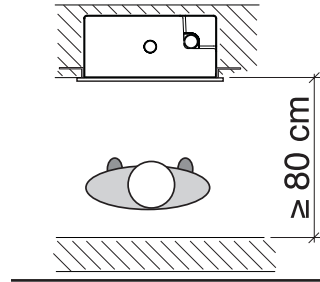
The high level of electrical protection and resistance to the elements allows for the extension of installation of the central power unit to outdoor environments, on balconies, loggias and verandahs.

The installation location must have adequate dimensions (a minimum of  $\geq 80$ cm in front of the central power unit) to allow for filter cartridge, dust bag or dust container replacement operations.

The installation area must be sufficiently lit (minimum 300 lumen) to allow operations of routine maintenance.

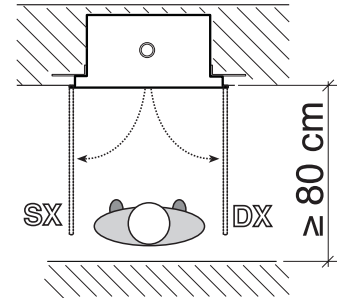
---

### QB CENTRAL POWER UNIT WITH ENCLOSURE CM021Q



---

### QB CENTRAL POWER UNIT WITH ENCLOSURE CM010Q



---

### NOTE



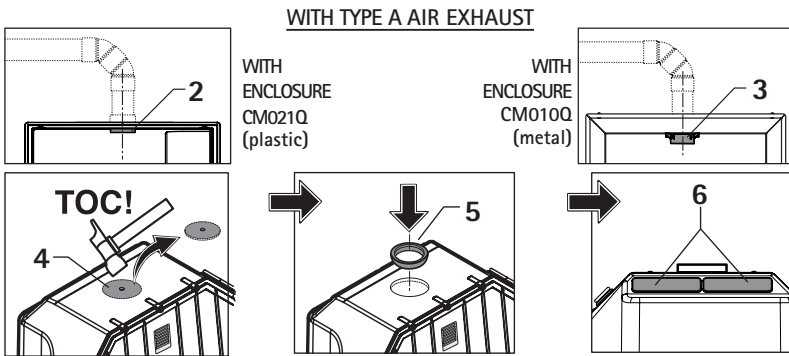
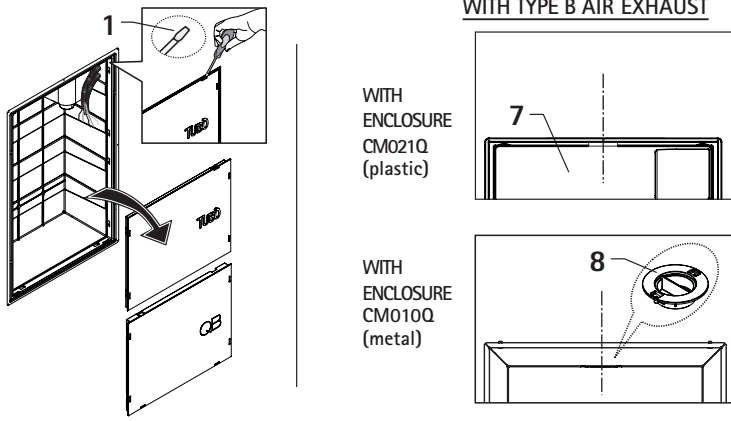
#### BIPOLAR SWITCH

A 230 VAC power supply line must be installed upstream from the central power unit and controlled by a bipolar switch.

With the central power unit installed outdoors, the bipolar switch must be inserted inside a junction box with adequate electrical protection.

# INSTALLING THE QB CENTRAL POWER UNIT

The QB central vacuum unit must always be installed together with the enclosure: either the CM021Q plastic model or the CM010Q metal model



## WITH ENCLASURE CM021Q (plastic)

### CHECK AIR EXHAUST

Remove the provisional mortar-guard doors with a flat tip screwdriver (1).

### With channelled air exhaust - TYPE A

With this type of exhaust, union (2) must already be inserted into the enclosure.

Use a hammer to open the notched area (4) of the central power unit to connect it to the union.

Assemble the sealing gasket (5) inside the open hole  
Before inserting the QB central power unit, the air exhaust opening caps (6) of the motor compartment must be mounted.

### With front air exhaust - TYPE B

The enclosure (7) is ready for direct door front exhaust.

## WITH ENCLASURE CM010Q (metal)

### CHECK AIR EXHAUST

Open the metal door and check the type of air exhaust.

### With channelled air exhaust - TYPE A

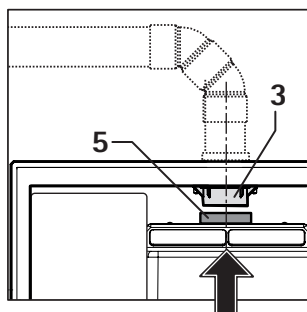
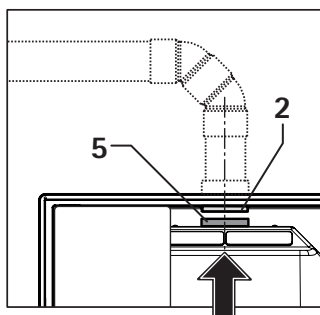
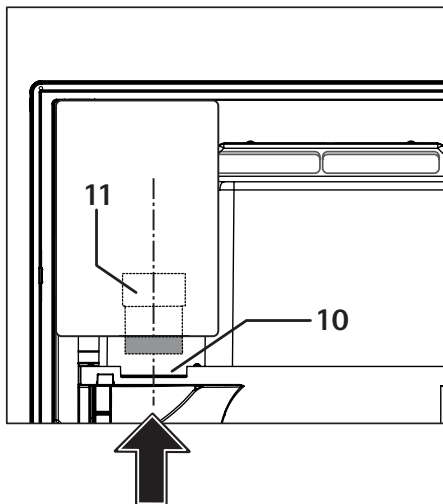
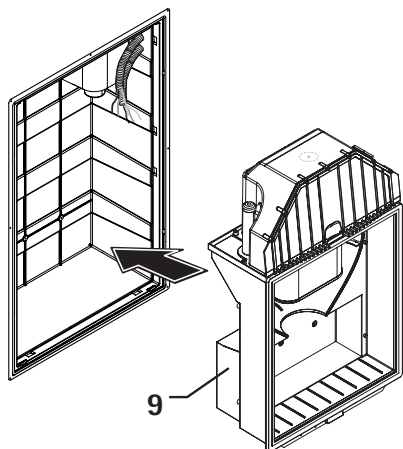
With this type of exhaust, union (3) must already be inserted into the enclosure.

Use a hammer to open the notched area (4) of the central power unit to connect it to the union.

Assemble the sealing gasket (5) inside the open hole  
Before inserting the QB central power unit, the air exhaust opening caps (6) of the motor compartment must be mounted.

### With front air exhaust - TYPE B

With this type of exhaust the sealing cap (8) must already be connected to the enclosure.



### WITH ENCLOSURE CM021Q (plastic)

Insert the fixed body (9) into the enclosure.

If exhaust is channelled (TYPE A), connect the air exhaust of the central power unit to union (2) already installed in the enclosure.

Check the proper position of the sealing gasket (5) inside the union (2).

Connect the dust intake (10) of the central power unit to the dust intake union (11) already assembled inside the enclosure.

### WITH ENCLOSURE CM010Q (metal)

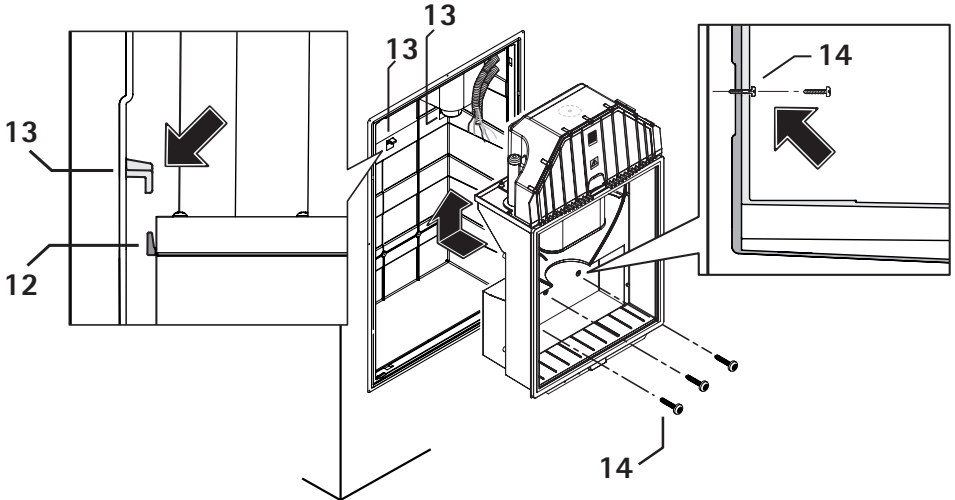
Insert the fixed body (9) into the enclosure.

If exhaust is channelled (TYPE A), connect the air exhaust of the central power unit to union (3) already installed in the enclosure.

Check the proper position of the sealing gasket (5) inside the union (3).

Connect the dust intake (10) of the central power unit to the dust intake union (11) already assembled inside the enclosure.

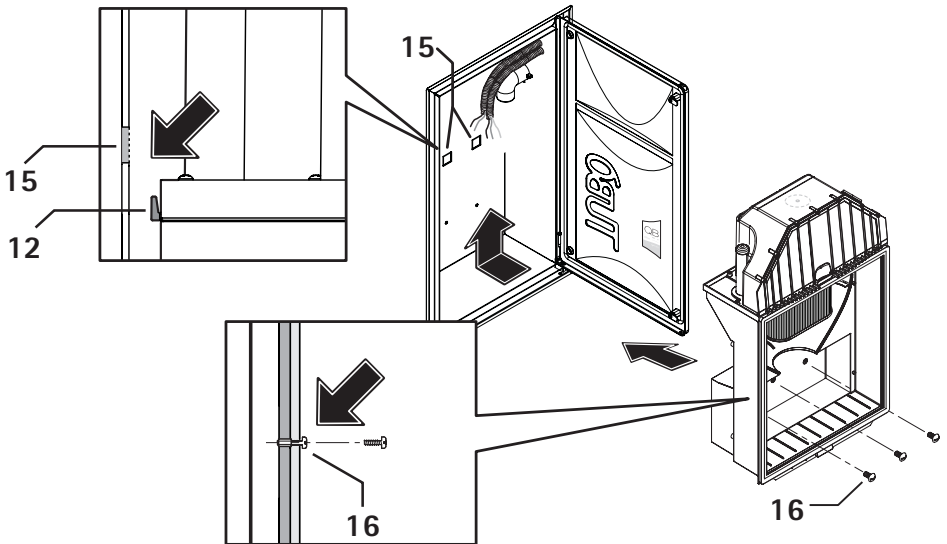
## FIXING QB TO THE ENCLOSURE



### WITH ENCLOSURE CM021Q

Push the central power unit upwards so that the 2 fixing hooks (12) on the side of the central power lodge into the 2 pivots (13) on the enclosure.

Insert the three screws (14) for enclosure CM021Q supplied with the installation kit and fix the central power unit to the enclosure.



### WITH ENCLOSURE CM010Q

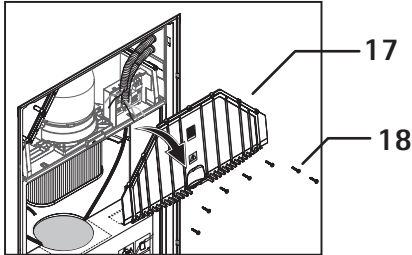
Push the two fixing hooks upwards (12) on the side of the central power unit so that they lodge into the two holes (15) located on the metal enclosure.

Insert the three screws (16) for the enclosure CM010Q supplied with the installation kit and fix the central power unit to the metal enclosure.

## ELECTRICITY CONNECTION

### BIPOLAR SWITCH

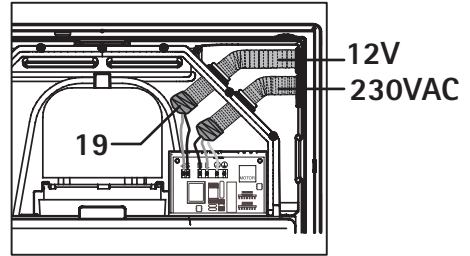
The power supply line of the QB central power unit must be controlled by a bipolar switch inserted upstream of the unit, which can be engaged by the end user. Use power cables with cross-section  $\geq 1.5$  mm.



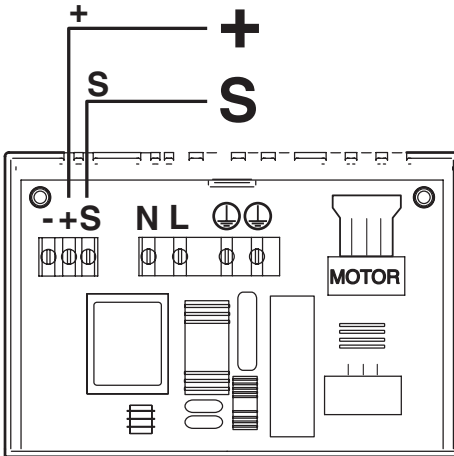
### DANGER OF ELECTROCUTION

Electrical wiring must be performed by specialized technicians.

ACCESS to the electrical board of the central power unit is prohibited to individuals lacking authorization, experience or product knowledge.



### 12 V - MICROSWITCH LINE CONNECTION



### 230 VAC LINE CONNECTION



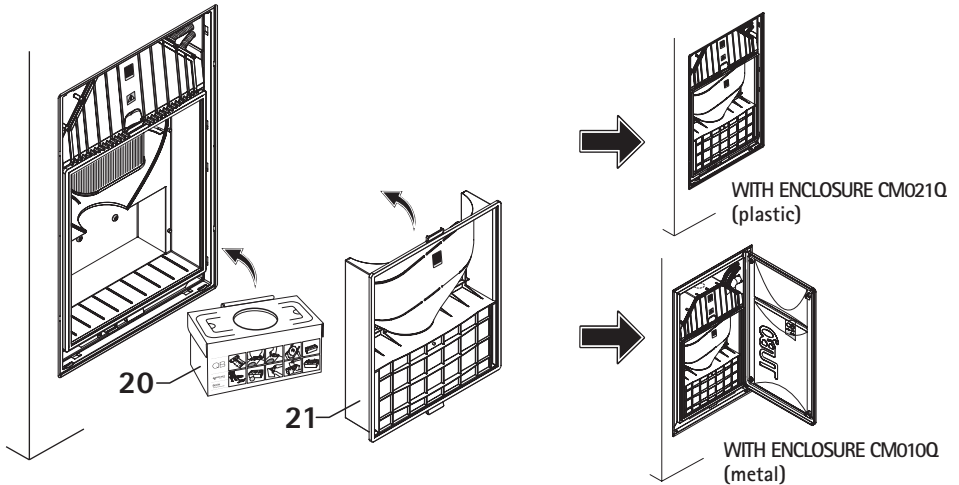
Open the door (17) of the motor compartment by loosening the screws (18).

Connect the 230 VAC power supply line to the terminal board **LINE** using clamp prods on the ends of the electrical lines.

Connect the socket activation line 12V to the terminal board **MICROSWITCH**.

Seal both ends of the electrical trimming with duct tape (19) or proper gaskets as shown in the figure in order to avoid air flow inside of these.

## INSERTING THE DUST CONTAINER AND REMOVABLE BODY

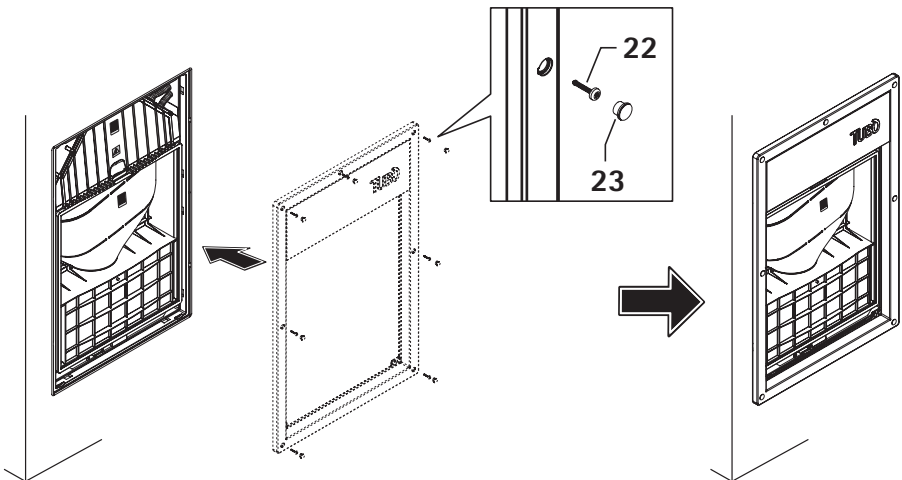


Once all power connections are complete shut the door to the motor compartment and screws in screws.

Insert the central power unit removable body (21). The central power unit removable body remains closed thanks to the magnetic clasp system.

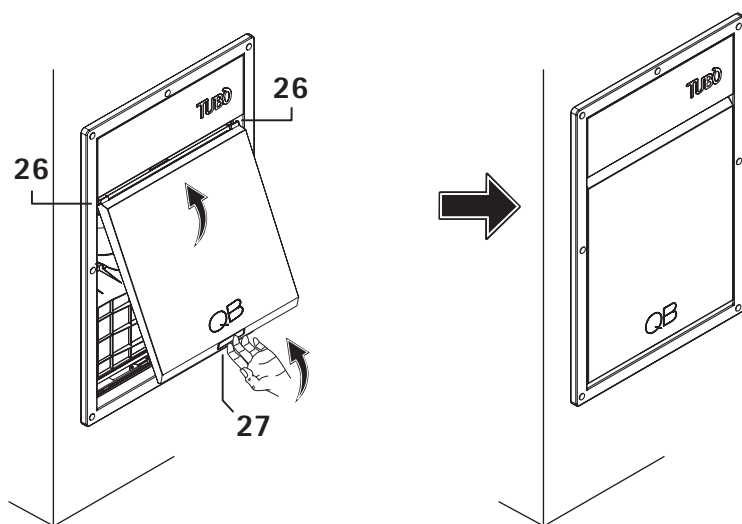
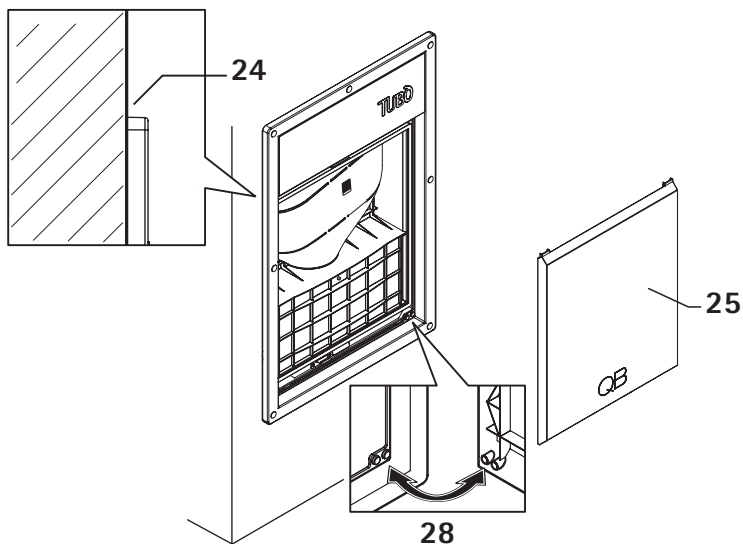
Insert the dust container (20): see instructions **ASSEMBLY AND INSERTION OF NEW DUST CONTAINER** at page 19.

## ASSEMBLY OF THE FRAME AND DOOR KIT (CODE CM821Q-SEPARATE ARTICLE)



Assemble the frame to the wall using the 7 fixing screws (22) in the enclosure holes.

Insert the caps (23) inside the frame.




---

NOTE

---

If installing QB outdoors on perimeter walls exposed to atmospheric conditions, the wall must be completely plumb (24) in order to avoid water seepage between the filter of the central power unit and the wall.

**Aertecnica declines all liability for water seepage due to slanted walls.**

Assemble the door (25) in the frame first inserting the two screws (26) on the top edge, also engaging the handle (27) when needed.

The door shuts thanks to the magnetic clasp system (28).



# GENERAL TEST OF THE TUBÒ CENTRAL VACUUM SYSTEM

The general centralised vacuum system inspection must be done after the final assembly of all vacuum sockets and the selected central power unit.

## VACUUM TEST

Insert a 7 - 9 metre hose in one of the sockets closest to the QB central power unit.

Insert the vacuum gauge (AT010) into the socket adjacent to that occupied and check that the de-pressurization value is within the range of 100 - 170 mbar.

The test is successful if the needle falls within this range.

Repeat the same operation in a middle socket of the system and in the socket furthest from the central power unit QB.

If the needle always falls within the same range, this means that the test is successful and the central vacuum system works properly.

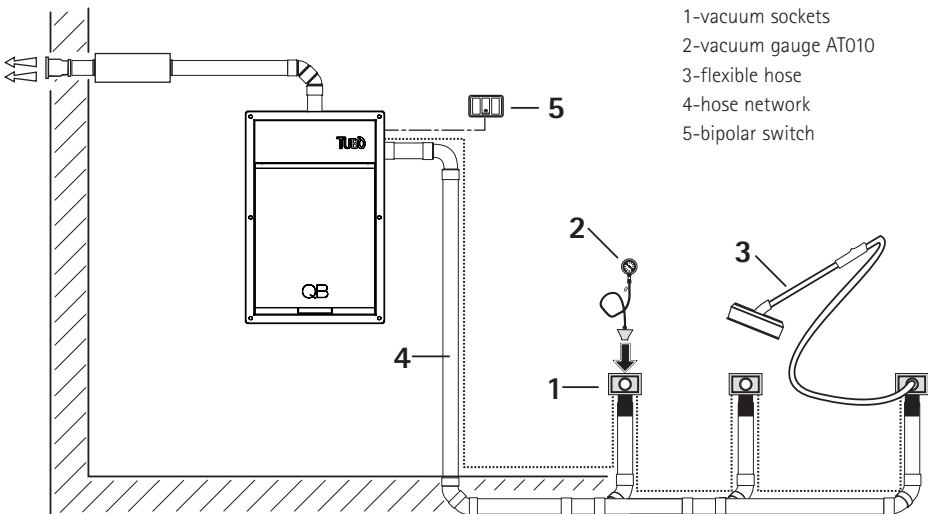
If one of the tests is negative (the needle falls outside of the range 100-170 mbar) it is necessary to check for system clogs or load loss.

## VALUE DETECTED BELOW 100 mbar

- 1 - check that coupling between the dust intake union and the QB central power unit is correct
- 2 - check the correct position of the dust intake sealing gasket on the QB central power unit
- 3 - check for the proper sealing of the removable body of the QB central power unit
- 4 - check for proper tightening of the 3 screws on the fixed body of the QB central power unit
- 5 - check for pressure loss in all vacuum sockets and in the hose network
- 6 - check for obstructions inside the flexible hose and hose network
- 7 - check for the proper position of the safety valve

## VALUE DETECTED OVER 170 mbar

8 - check for any obstructions inside the flexible hose or hose network; if the entire system and the flexible hose are free of obstructions this means that the hose network was realized outside of design principles.



## ORDINARY MAINTENANCE

Careful maintenance prolongs the life-time of the central power unit and guarantees better performance.

## DUST CONTAINER REPLACEMENT

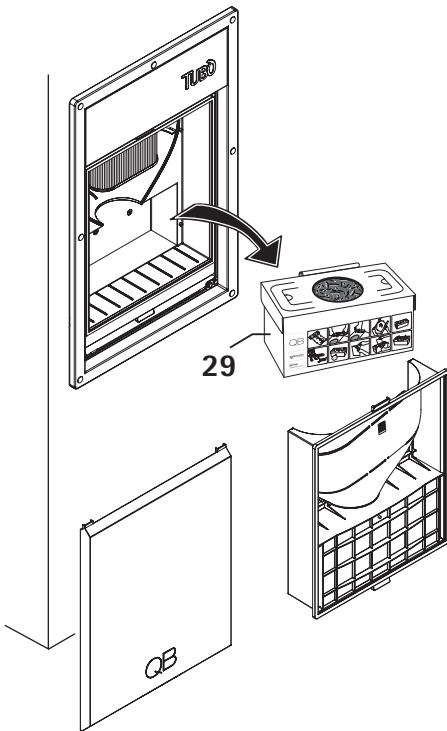


### ATTENTION

You may come into contact with dust when performing this operation.



Before removal it is recommended to wear suitable personal protective garments.



### REMOVAL, SEAL AND DISPOSAL OF A FULL DUST CONTAINER

Remove the full dust container (29) from its seat.

---

## NOTE

---



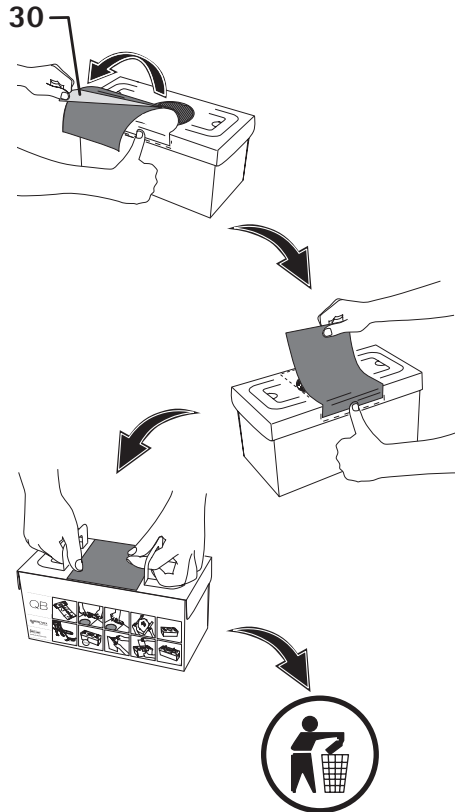
Before starting with any maintenance operation, disconnect the central power unit from the power supply.

---

## ORDERING SPARES

---

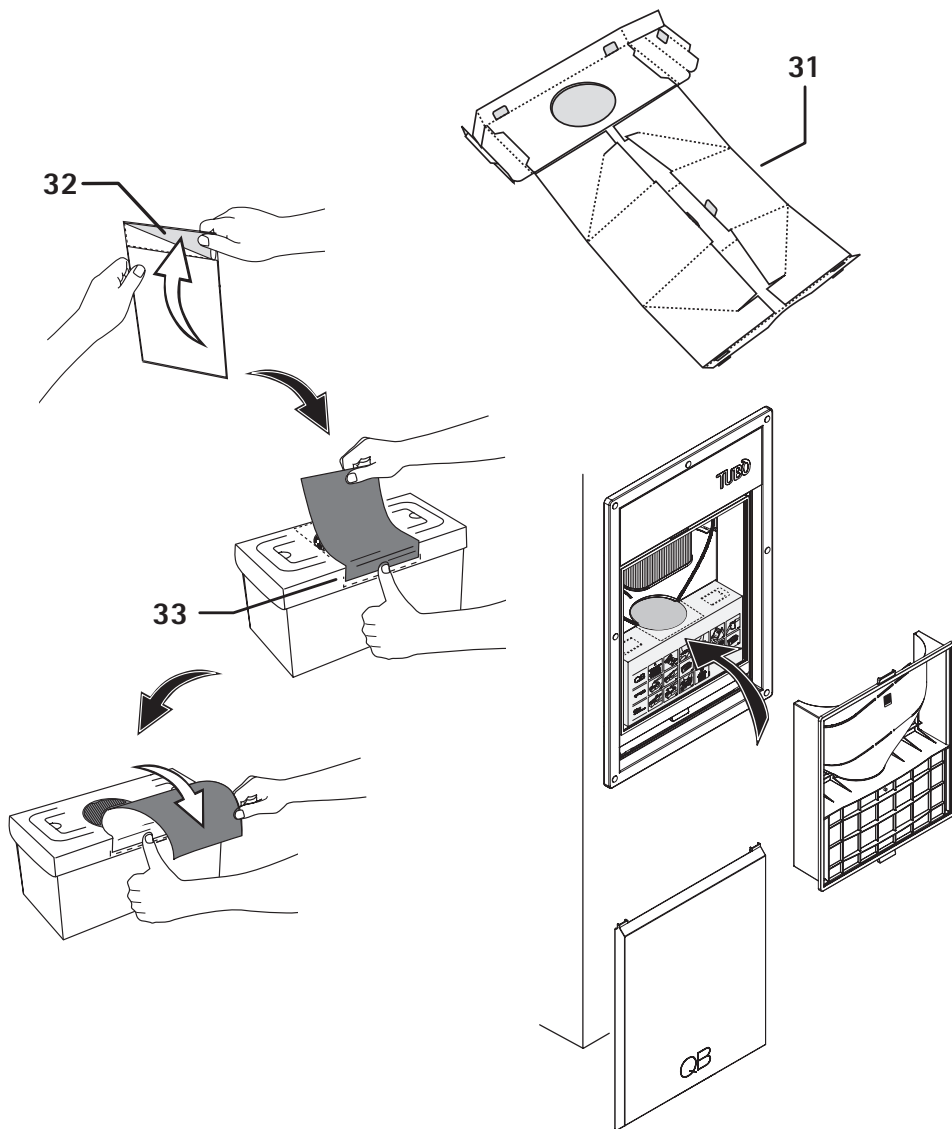
To order original Aertecnica: [www.aertecnica.com](http://www.aertecnica.com)



Remove the protective sticker film (30) and seal the dust container.



Dispose of the dust container respecting the environmental laws in force.



**ASSEMBLY AND INSERTION OF A NEW DUST CONTAINER**

Get a new dust container (31) and assemble it as shown on the container.

Apply an new seal sticker (32) in the point indicated (33).

Fold the sticker back on the front edge of the container.

Replace the dust container into its seat and close the central power unit.



**USE ONLY ORIGINAL AERTECNICA SPARE PARTS**

## FILTER CARTRIDGE REPLACEMENT

Replace the cartridge filter every 2-3 years. This may vary depending on amount of system use.

### ORDERING SPARES

To order original Aertecnica: [www.aertecnica.com](http://www.aertecnica.com)

### NOTE

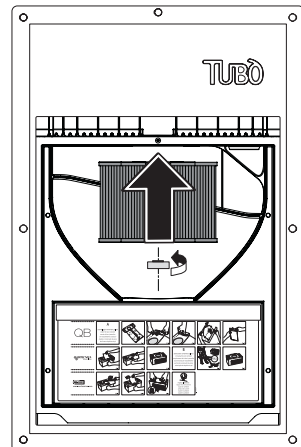
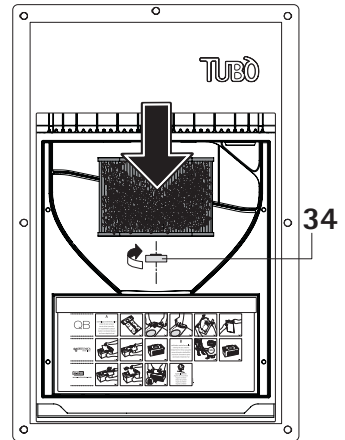
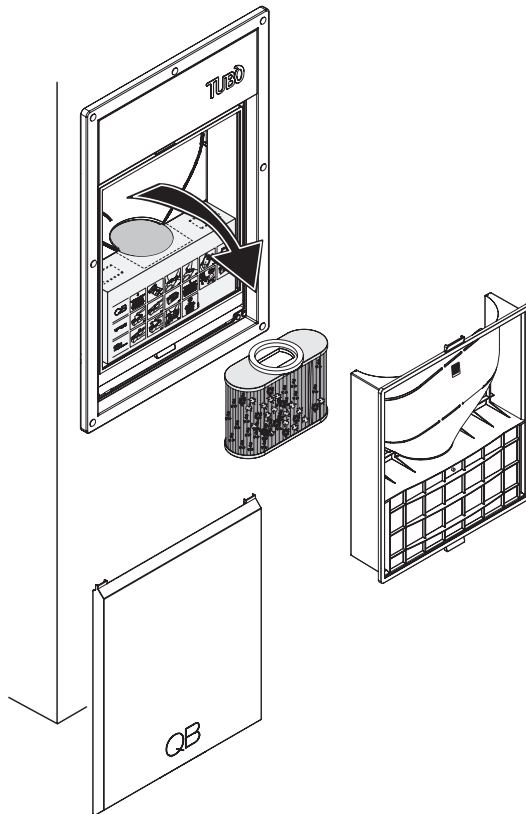


#### ATTENTION

You may come into contact with dust when performing this operation.



Before removal it is recommended to wear suitable personal protective garments.



Unscrew the knob (34) that fastens the cartridge and remove it from its housing.

Insert a new cartridge and push fully in, then screw in knob completely.



#### ATTENTION

The central power unit must not be started without the filter cartridge assembled inside. Failure to follow this rule could cause damage to the motor, not included in the warranty.

## FILTER CARTRIDGE REGENERATION

Periodic filter cartridge regeneration improves overall centralised vacuum system productivity.  
With normal system use, the cartridge should be checked every 4 months.

To effectively regenerate the saturated cartridge and keep the centralised vacuum system operating, it is recommended to insert a new filter cartridge immediately, restart the system and vacuum the largest dust particles from the saturated cartridge using the system itself.

---

### NOTE

---



#### ATTENTION



You may come into contact with dust when performing this operation.



Before removal it is recommended to wear suitable personal protective garments.

### INSERTING A SPARE CARTRIDGE

Unscrew the knob (b) that fastens the cartridge and remove it from its housing.

Insert a new filter cartridge into the central power unit and screw the knob fully in.

Reassemble the door. Use the system to regenerate the used filter cartridge.

### USED CARTRIDGE REGENERATION

Vacuum the large particles deposited on the walls of the used cartridge by using the flexible hose and crevice nozzle AP342 (35).

Rinse the cartridge walls from vacuumed dust under a moderate jet of running water.

Let the regenerated cartridge dry and check for any tears on the walls (36); in this case the cartridge must be disposed of in accordance to the environmental laws in force.

---

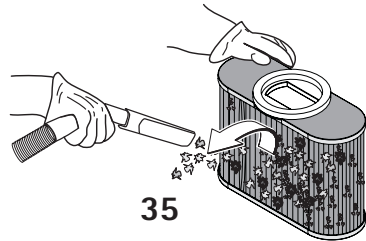
### NOTE

---

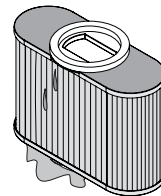
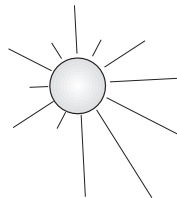
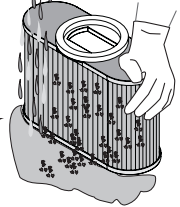
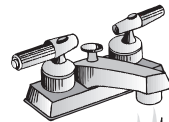


#### ATTENTION

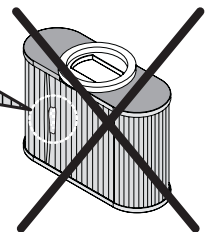
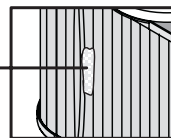
The central power unit must not be started without the filter cartridge assembled inside. Failure to follow this rule could cause damage to the motor, not included in the warranty.



35



36



## CENTRAL POWER UNIT DISPOSAL

At the end of its life cycle, the central power unit must be disposed of in accordance to the environmental laws in force.

The following table lists its manufacturing materials.



### IMPORTANT

The materials listed below must be separated and stored to be recycled or disposed of in accordance to the environmental laws in force in the country of use.

TYPE OF MATERIAL	PRESENCE IN CENTRAL POWER UNIT	SPECIFICATION	DISPOSAL
plastics and rubber	motor soundproofing	propylene	<p>The rules that regulate the disposal or demolition of the central power unit, its components, pollutant materials and substances present vary in relation to the country of end use.</p> <p>We recommend consulting the environmental regulatory agencies and bodies, and to respect the laws on the matter</p>
	under-motor fitting	rubber	
	dust inlet gasket	rubber and ABS	
	dust inlet fitting	ABS	
	air exhaust gasket	rubber and ABS	
	air exhaust fitting	ABS	
	filter cartridge	polyester	
	filter fix knob	propylene	
	fixed body central power unit	propylene	
	removable body central power unit	propylene	
	motor compartment door	propylene	
	electronic card box	propylene	
	corrugated sheathing	propylene	
	sheathing clamp	rubber	
integrated safety valve	propylene		
stickers and plates	PVC		
hardware comp.	screws and rivets	iron	
	screws and rivets	galvanized steel	
electronic components	electronic board	misc. materials	
	electric motor	misc. materials	
	wires	copper	
containers	dust containers	corrugated cardboard	
	central power unit pack	corrugated cardboard	
	bags	nylon	

## TROUBLESHOOTING

PROBLEM	CAUSE	INTERVENTION
There is no air intake from all the sockets	Power supply cable disconnected	Connect the power supply cable
	12V socket cable line not connected or incorrectly connected	Connect the 12V socket cable line or check the wiring
	The motor overheated. The motor temperature exceeded 80 °C.	Check if the air exhaust line is free or if two air exhaust openings of the motor compartment are blocked. Wait for the motor to cool down.
		Make sure the filter cartridge is not saturated. In this case, perform maintenance. Wait for the motor to cool down.
	The removable body is not correctly hooked	Reattach the removable body correctly.
There is no air intake from a socket	The microswitch in a vacuum socket is damaged.	Call a specialised technician.
Low amount of air intake	There is clogging in the system	Call a specialised technician.
	The filter cartridge is saturated	Perform cartridge maintenance.
	Multiple vacuum sockets are being used at the same time on the system	The central power unit may only be used by one operator at a time.
	The dust intake gasket is damaged or out of position	Check the position of the dust intake union.
	The air exhaust line is clogged	Clear the air exhaust line of clog or call a specialized technician.
	The hose is partially obstructed.	Free the obstruction from the hose.
The central power unit always remains activated even with the sockets closed	The microswitch in a vacuum socket is damaged.	Call a specialised technician.
The central power unit won't turn on	No power flow to the central power unit	Call a specialised technician.
	The electronic card is defective.	Call a specialised technician.
<b>Call a specialised technician for other causes that are not covered in this manual</b>		

## EN

The descriptions and illustrations may change. Aertecnica S.p.A. reserves the right to modify the product and the related technical documentation without incurring any obligation to third parties.



### **AERTECNICA S.p.A.**

Via Cerchia di Sant'Egidio, 760  
47521 Cesena (FC) - ITALY  
Tel. +39 0547 637311  
Fax +39 0547 631388  
info@aertecnica.com  
[www.aertecnica.com](http://www.aertecnica.com)

